



# Knowledge Bank: Year 2 - History – Great Fire of London.

## How did the Great Fire of London start?

Images:



Pudding Lane



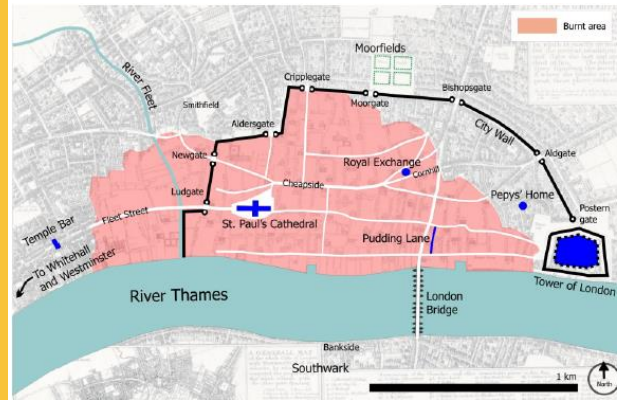
Samuel Pepys



River Thames

Maps:

Pudding Lane was in London, North of the River Thames. This was where the Great Fire of London started, in a bakery owned by Thomas Faryner.



What I should already know:

In Year 1, the children learnt about Florence Nightingale and hospitals in the Victorian times.



Key Facts:

Fact	Explanation.
The Great Fire of London lasted for 5 days.	This is because the buildings were made of wood and were built close together.
Some people who saw the Great Fire of London, recorded the events.	Because there were eyewitnesses, we are able to understand what happened and the order of events.
The Great Fire of London highlighted the need for a fire brigade to prevent this happening again.	The events of the Great Fire of London led to the creation of the fire brigade as we now know it.

Key Vocabulary:

Word	Definition
<b>Bakery</b>	A place where bread and cakes are made.
<b>Flammable</b>	When something burns easily.
<b>Eye witness</b>	A person who saw an event with their own eyes.
<b>Fire break</b>	When a building is destroyed to make a gap to stop a fire from spreading.