

# Welcome to Year 3!

Wales: Mrs Hale (Year Leader)  
England: Mrs Philpott  
Northern Ireland: Mr Rudgley  
Scotland: Mrs Ahmed



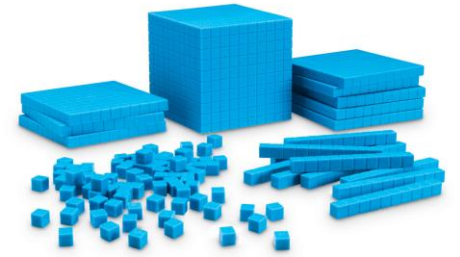
## Year 3 Topics:

A topic overview is sent out at the start of each half term to parents and carers. This will include a date for the Topic Showcase:

Autumn 1	Autumn 2	Spring 1	Spring 2	Summer 1	Summer 2
Presenting Portsmouth  (Geography led topic)	Tribal Tales  (History led topic)	Scrumdiddl-yumptious  (Science led topic)	I am Warrior  (History led topic)	Tremors  (Geography led topic)	Predator  (Science led topic)



Year 3	Week 1	Week 2	Week 3	Week 4	Week 5	Week 6
Term 1	Number: Place Value			Number: Addition and Subtraction (Week 3-7)		
Term 2	Number: Addition and Subtraction		Number: Multiplication and Division			
Term 3	Number: Multiplication and Division		Measurement: Money	Statistics	Number: Multiplication and division	
Term 4	Measurement: Length and Perimeter			Number: Fractions		
Term 5	Number: Fraction		Measurement: Time	Consolidation: Number: Four operations		
Term 6	Geometry: Properties of Shape		Measurement: Mass and Capacity	Number: Fractions		



Diennes



Place Value counters

- Develop children's mental strategies e.g.  $15 + 9$
- Develop children's written formal methods as they begin to work with numbers up to 1000 e.g.  $345 + 469$

You can support your child by providing lots of opportunities for them to calculate using money, measure ingredients whilst cooking or help them learn to tell the time. Also, practise times tables!

# Times Tables



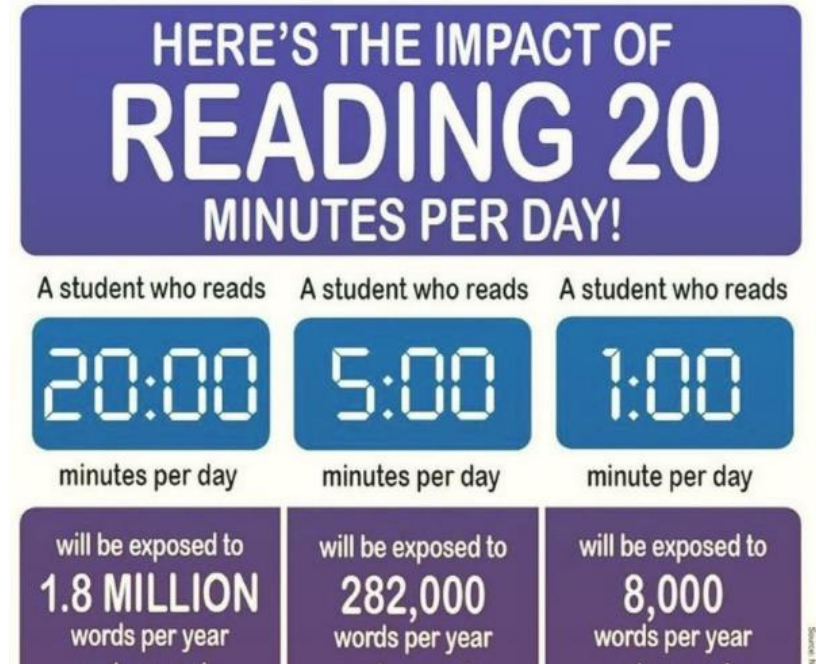
- Children will receive a times table rockstars login and password.
- Inter-school and trust competitions will encourage children to compete against one another.
- Parents evening will be an opportunity to share your child's heatmap - please use this to practise.

	10	2	5	3	4	8	6	7	9	11	12
10	10 × 10	10 × 2	10 × 5	10 × 3	10 × 4	10 × 8	10 × 6	10 × 7	10 × 9	10 × 11	10 × 12
2	2 × 10	2 × 2	2 × 5	2 × 3	2 × 4	2 × 8	2 × 6	2 × 7	2 × 9	2 × 11	2 × 12
5	5 × 10	5 × 2	5 × 5	5 × 3	5 × 4	5 × 8	5 × 6	5 × 7	5 × 9	5 × 11	5 × 12
3	3 × 10	3 × 2	3 × 5	3 × 3	3 × 4	3 × 8	3 × 6	3 × 7	3 × 9	3 × 11	3 × 12
4	4 × 10	4 × 2	4 × 5	4 × 3	4 × 4	4 × 8	4 × 6	4 × 7	4 × 9	4 × 11	4 × 12
8	8 × 10	8 × 2	8 × 5	8 × 3	8 × 4	8 × 8	8 × 6	8 × 7	8 × 9	8 × 11	8 × 12
6	6 × 10	6 × 2	6 × 5	6 × 3	6 × 4	6 × 8	6 × 6	6 × 7	6 × 9	6 × 11	6 × 12
7	7 × 10	7 × 2	7 × 5	7 × 3	7 × 4	7 × 8	7 × 6	7 × 7	7 × 9	7 × 11	7 × 12
9	9 × 10	9 × 2	9 × 5	9 × 3	9 × 4	9 × 8	9 × 6	9 × 7	9 × 9	9 × 11	9 × 12
11	11 × 10	11 × 2	11 × 5	11 × 3	11 × 4	11 × 8	11 × 6	11 × 7	11 × 9	11 × 11	11 × 12
12	12 × 10	12 × 2	12 × 5	12 × 3	12 × 4	12 × 8	12 × 6	12 × 7	12 × 9	12 × 11	12 × 12

At the end of year 4 children are expected to know all of their times tables (up to X12) and will undertake the Multiplication Tables Check.

## Home Learning

- Set on Forms on Thursday, due Tuesday (don't panic!)
- Will always be retrieval based
- Topic/Reading home learning project per half term
- Please read regularly and encourage children to fill out their online reading adventure journals. Find a time that works for you as a family!
- Please practise your child's times tables with them.



# Trips

## Autumn 1

Portsmouth Walking Trip (week 4)

## Autumn 2

Cumberland House Museum (Week TBC)

## Summer 2

Marwell Zoo (Week TBC)



*This trip is heavily subsidised but some payment will be required via parent pay.*



# PE Days

England - Monday and Friday

NI - Monday and Friday

Scotland - Monday and Wednesday

Wales - Wednesday and Thursday



*We are here to help.....*



*Please come and see  
us!*

